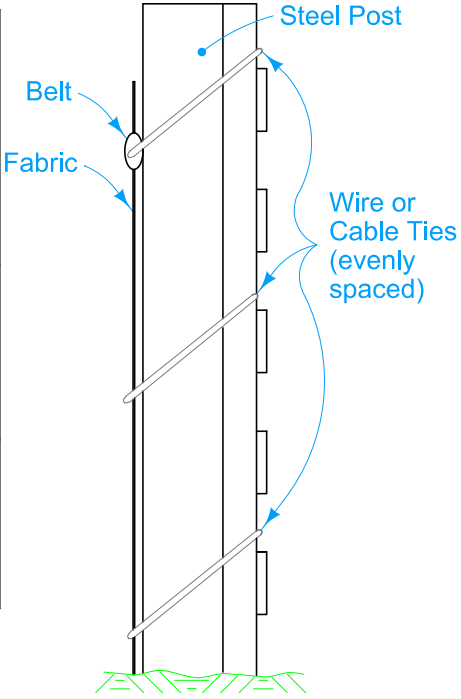
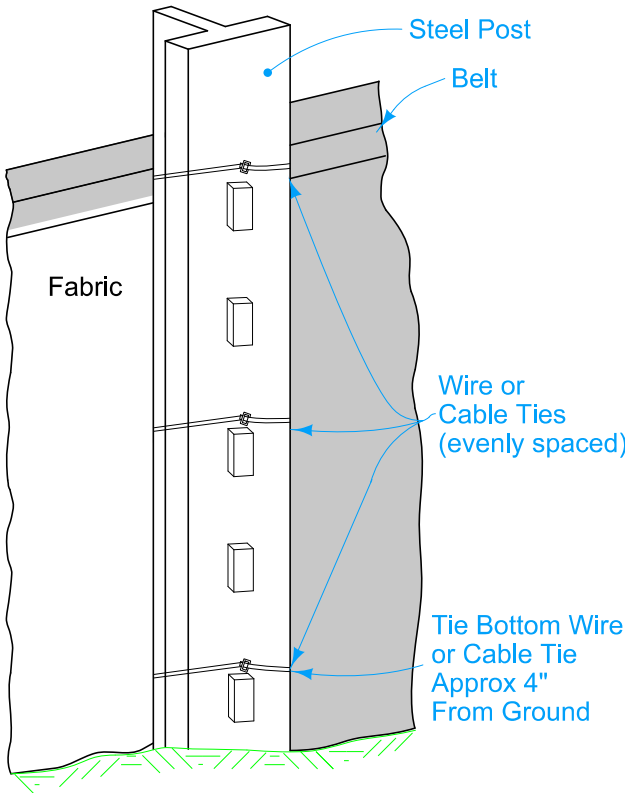
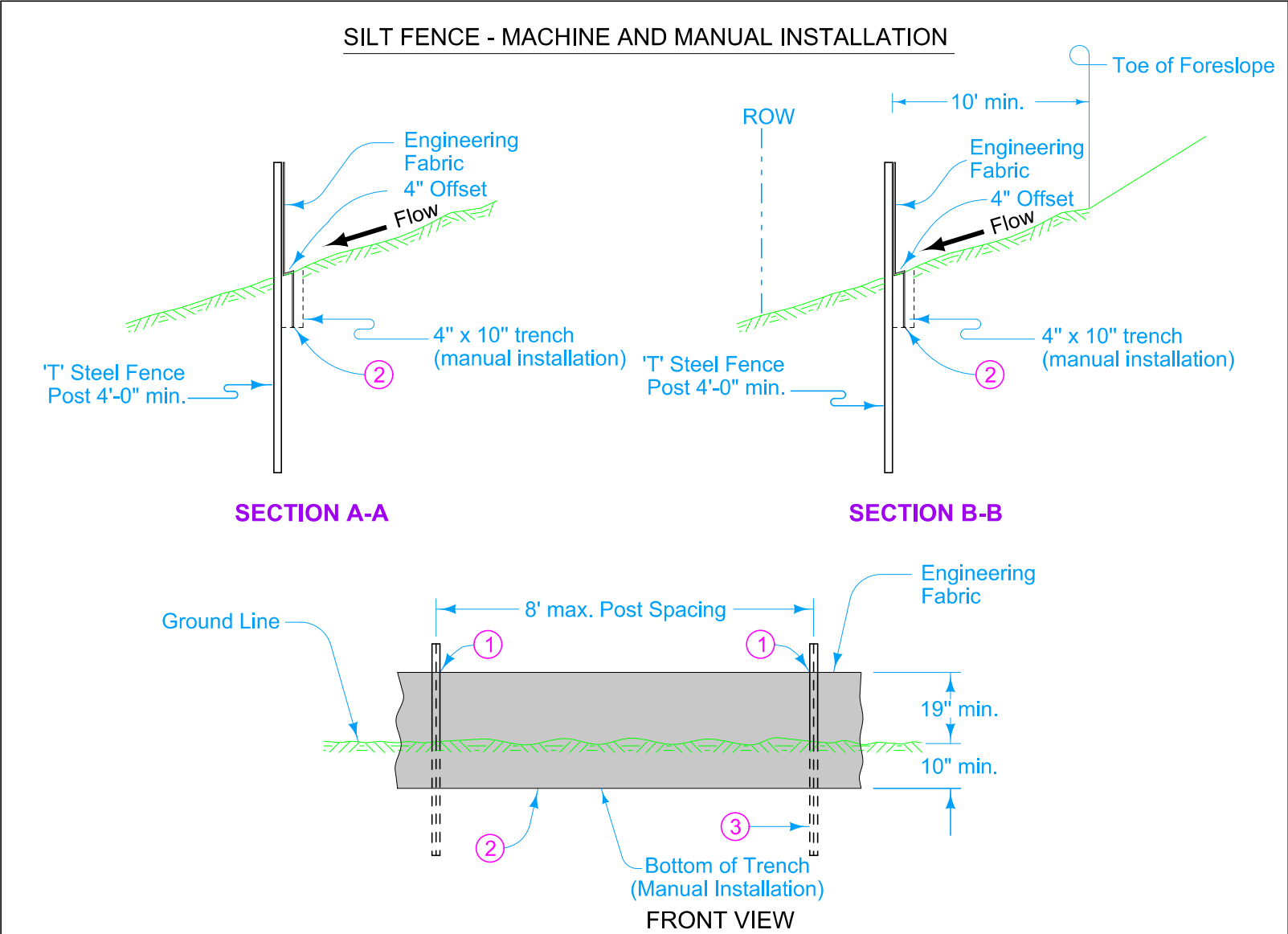


PLAN FOR SILT FENCE 11



PROFILE VIEW  
ATTACHMENT TO POST



BACK VIEW  
ATTACHMENT TO POST

Install all silt fence using a silt fence machine. Use manual (trench) installation if physical conditions prohibit machine installation.

For machine installation, compact by driving over each side of silt fence at least two times with a rubber-tired vehicle.

For manual installation, compact with a mechanical or pneumatic tamper.

1 Secure top of engineering fabric to steel posts using cable ties (50 lb.) or wire passing through or encompassing the belt. See attachment to post.

2 For manual installation only, fold engineering fabric along bottom of trench.

3 Embed all posts 28 inches below the ground line.

11 Refer to Tab. 100-17

13 The contractor has two installation options:  
- Place silt fence continuously up to a maximum of 200 feet. For every 200 foot segment of fence placed, flare up the slope on both ends 20 feet of the segment to contain runoff as shown, or  
- Place silt fence continuously. Every 200 feet, place a hump that extends 20 feet up the slope to contain runoff as shown.

14 Place silt fence continuously up to a maximum length of 200 feet. For every segment of silt fence that is placed, flare up the slope on both ends 20 feet of the segment to contain runoff as shown.



Possible Contract Items:  
Silt Fence  
Silt Fence for Ditch Checks

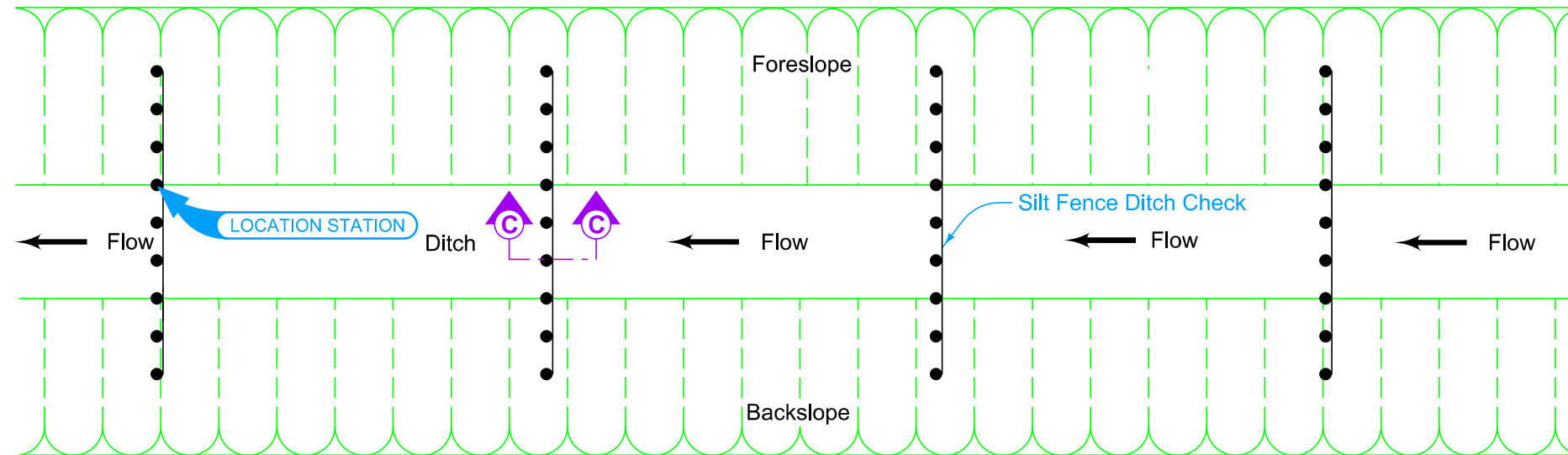
Possible Tabulations:  
100-17  
100-18

IOWA DOT		REVISION	
STANDARD ROAD PLAN		6	04-20-21
EC-201		SHEET 1 of 6	

REVISIONS: Modified trench to 10". Added circle notes 13 & 14.

APPROVED BY DESIGN METHODS ENGINEER

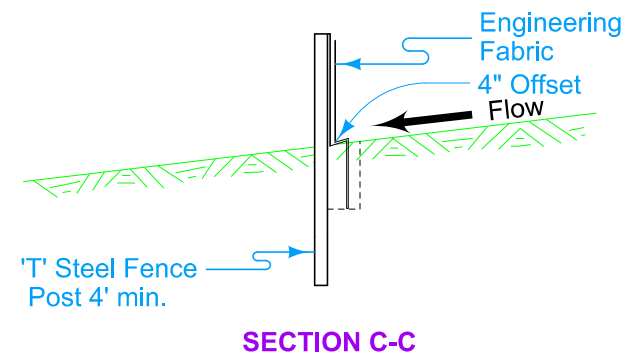
SILT FENCE



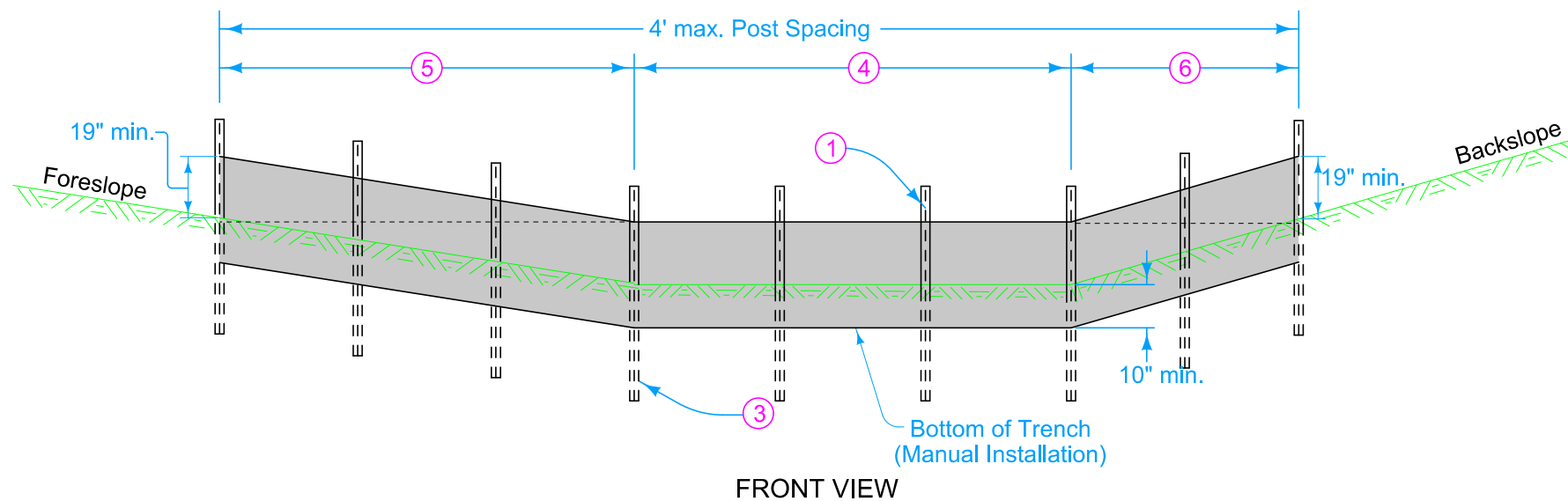
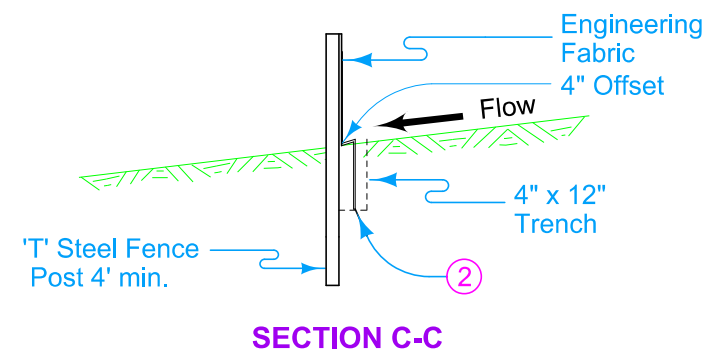
PLAN FOR DITCH CHECK (TYPE 1) ⑫

- ① Secure top of engineering fabric to steel posts using cable ties (50 lb.) or wire passing through or encompassing the belt. See attachment to post.
- ② For manual installation only, fold engineering fabric along bottom of trench.
- ③ Embed all posts 28 inches below the ground line.
- ④ Locate posts at toe of foreslope and toe of backslope and space remaining posts equally.
- ⑤ Minimum end span (in feet) = 2 X Foreslope (H:V).
- ⑥ Minimum end span (in feet) = 2 X Backslope (H:V).
- ⑫ Refer to Tab. 100-18

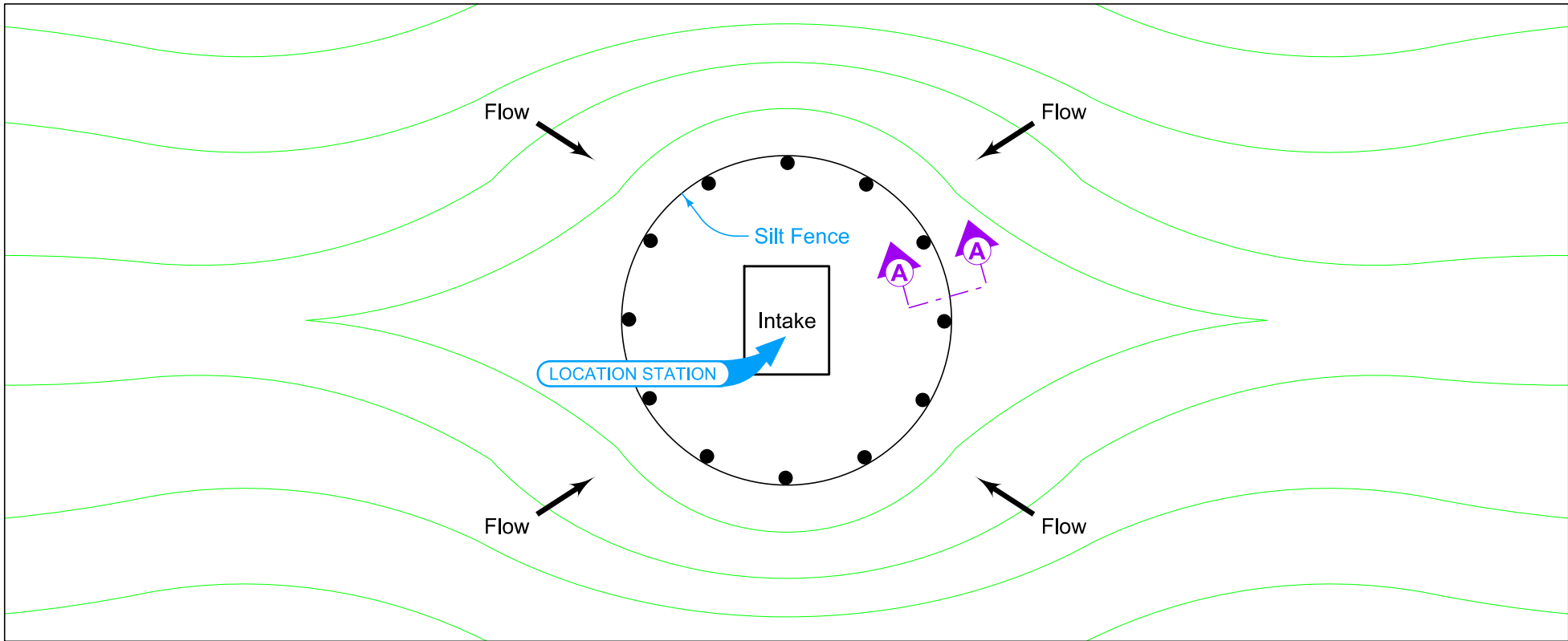
#### DITCH CHECK - MACHINE INSTALLATION



#### DITCH CHECK - MANUAL INSTALLATION

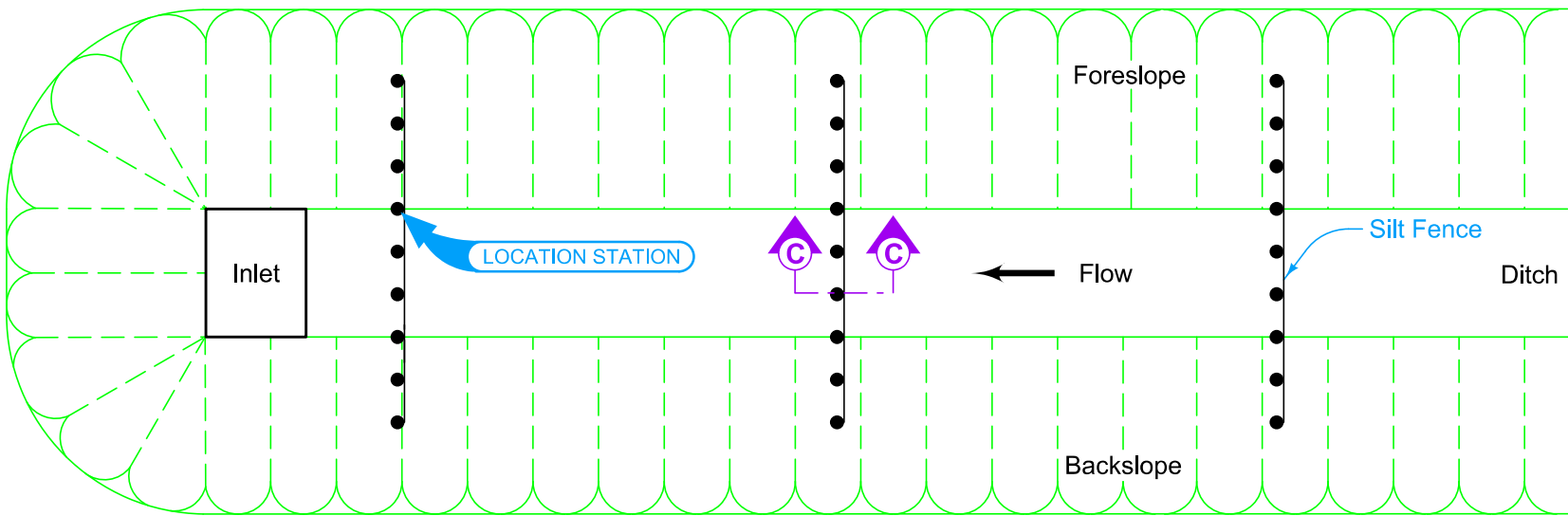


<b>IOWA DOT</b> <b>STANDARD ROAD PLAN</b> REVISIONS: Modified trench to 10". Added circle notes 13 & 14. APPROVED BY DESIGN METHODS ENGINEER <b>SILT FENCE</b>	REVISION	
	6	04-20-21
	<b>EC-201</b> SHEET 2 of 6	





PLAN FOR SILT FENCE AT INTAKE (TYPE 2) <sup>12</sup>

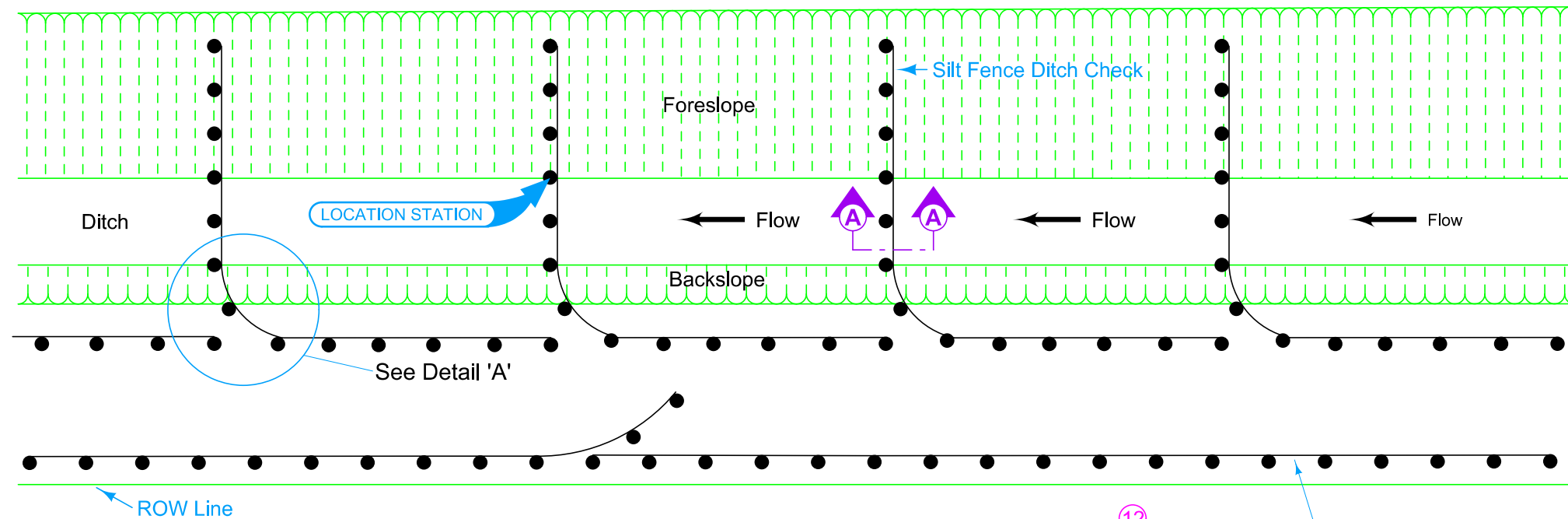
<sup>12</sup> Refer to Tab. 100-18



PLAN FOR SILT FENCE DITCH CHECK AT INLET (TYPE 3) <sup>12</sup>

 Contour Lines

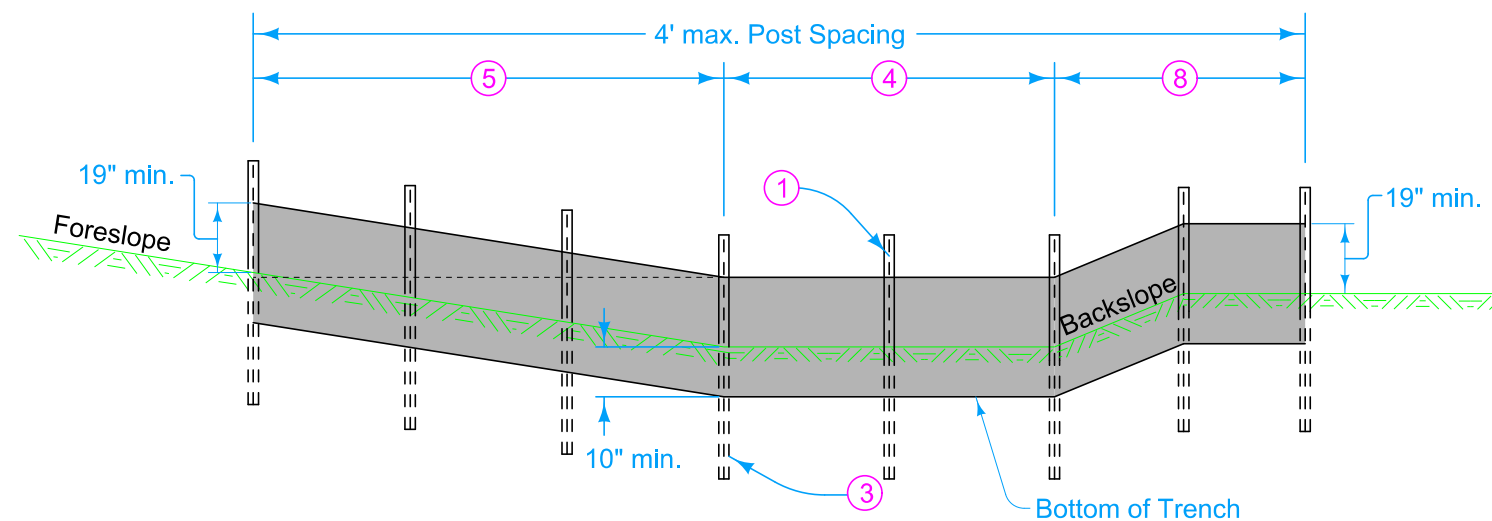
 IOWA   DOT	REVISION	
	6	04-20-21
	EC-201	
STANDARD ROAD PLAN	SHEET 3 of 6	
REVISIONS:      Modified trench to 10". Added circle notes 13 & 14.		
		
APPROVED BY DESIGN METHODS ENGINEER		
SILT FENCE		



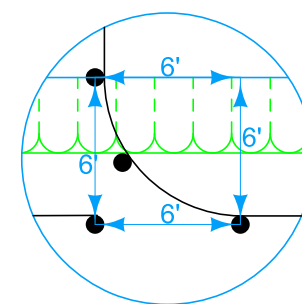
PLAN FOR SILT DITCH (SHALLOW DITCH SECTION-TYPE 4) <sup>12</sup>

Perimeter Silt Fence (see EC-201 page 1)



- <sup>1</sup> Secure top of engineering fabric to steel posts using cable ties (50 lb.) or wire passing through or encompassing the belt. See attachment to post..
- <sup>3</sup> Embed all posts 28 inches below the ground line.
- <sup>4</sup> Locate posts at toe of foreslope and toe of backslope and space remaining posts equally.
- <sup>5</sup> Minimum end span (in feet) = 2 X Foreslope (H:V).
- <sup>8</sup> Place posts shown in Detail 'A' to transition from transverse to parallel installation. Place one post at the back slope intercept and the other beyond the intercept.
- <sup>12</sup> Refer to Tab. 100-18



FRONT VIEW

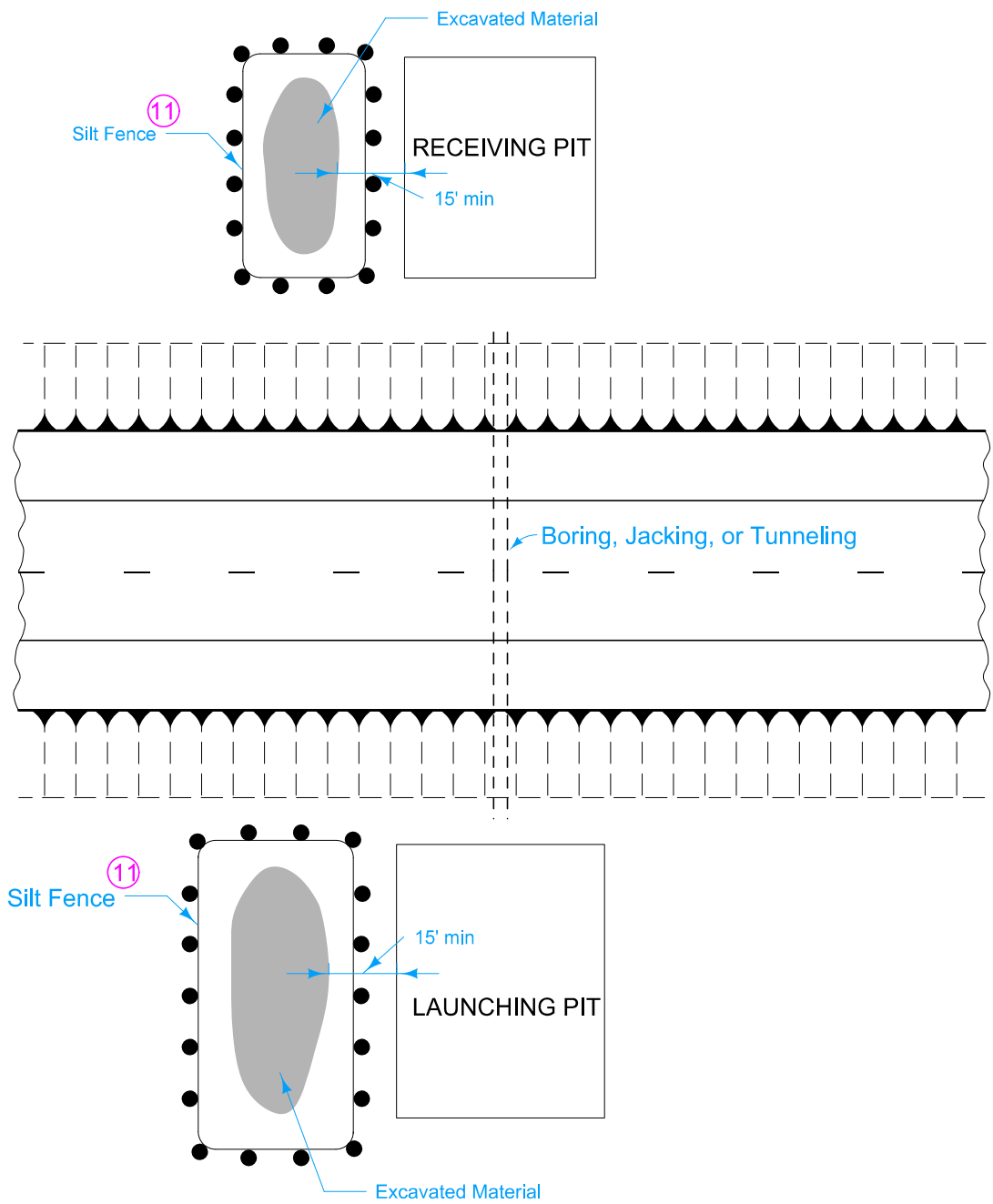


Detail 'A'



<div>IOWA   DOT</div> <div>STANDARD ROAD PLAN</div>	REVISION	
	6	04-20-21
	EC-201	
	SHEET 4 of 6	
REVISIONS:      Modified trench to 10". Added circle notes 13 & 14.		
<div></div>		
APPROVED BY DESIGN METHODS ENGINEER		
<div>SILT FENCE</div>		



11 Refer to Tab. 100-17



PLAN FOR SILT FENCE FOR TRENCHLESS CONSTRUCTION

 IOWA   DOT	REVISION	
	6	04-20-21
	EC-201	
	SHEET 6 of 6	
REVISIONS: Modified trench to 10". Added circle notes 13 & 14.		
		
APPROVED BY DESIGN METHODS ENGINEER		
SILT FENCE		